

Jul/Aug 2011

Welcome to the thirteenth edition of the Kentish e-news! All operators are encouraged to submit articles on a bi-monthly basis regarding new promotions or changes to tourism-related businesses to update other business operators on new developments within the Kentish region.

We encourage feedback, comments or suggestions from tourism operators about Kentish e-news to enable the newsletter to be as user-friendly as possible. This edition's featured image is part of the 'Story of the Sheffield Murals' audio tour taken by Dan Fellow © All Rights Reserved.



Kentish Visitor Information Centre

5 Pioneer Crescent, SHEFFIELD TAS. Ph 03 6491 1036 or email kvic@kentish.tas.gov.au

 Kentish, Latrobe, Devonport and Central Coast Councils have combined together for marketing purposes under the banner of Devonport and Cradle Country Marketing Group. This has allowed us to promote the region, our attractions, accommodation and eateries in order to encourage visitors to stay in this area for longer. Each individual region has developed its own Local Tourism Association. The Cradle Country Marketing Group advocates these groups and supports the idea of sharing information and encouraging interaction from

industry stakeholders.

The Devonport & Cradle Country Marketing Group would like to invite you to come and join us on a bi-monthly basis to have some input into the initiatives and advertising that this group will be undertaking in the 2011/12 financial year. We feel that it is important for you, as stakeholders, that your ideas be heard and taken into consideration in the development of our updated brochure and marketing campaign.

Where: Devonport Entertainment and Convention Centre

When: August 10th at 2:00 – 4:00pm
RSVP to Mel Herbert by August 8th on 6424 0521 or mherbert@devonport.tas.gov.au

Page Two
2011 Music Hall

2011 Pure Tasmania Cycling Challenge

Truffle Farm in Sheffield

Page Three
Cradle Mountain Chateau

Craft Beer at Cradle Mountain

Page Four
Roland Art Gallery

Green Tourism

Friday Nite Folk

IN THIS ISSUE

Events in Kentish

Wilmot Market – 2 July & 6 August 2011

Sheffield Town Hall Market – 16 July & 20 August 2011

Redwater Creek Steam & Society Railway – 2 & 3 July & 6 & 7 August 2011

Lions Club of Kentish Music Hall – Matinee shows
Sunday 14 August & Sunday 21 August.

Evening Shows

Friday 19 August, Saturday 20 August, Friday 26 August and Saturday 27 August

For further information on these events, accommodation bookings, attractions and tours, visit www.sheffieldcradleinfo.com.au.

To update or remove your details on the Kentish e-news mailing list, please contact:

Vicki Saunders Tourism Development Officer
5 Pioneer Crescent SHEFFIELD TAS 7306

Ph: 03 6491 1036 | Email: vicki@kentish.tas.gov.au | www.sheffieldcradleinfo.com.au

Events

2011 Kentish Lions Club Music Hall

The Kentish Lions Club annual Music Hall will dazzle and delight audiences of all ages!

The Music Hall this year will let you relive your old favourite songs. Live music, action, intrigue with melodrama, jokes and sketches will be presented by MC Robin Pegus.

Put an end to the winter blues and enjoy a lively night out for only \$35 including a meal.

Tickets can be purchased by phoning Don Braid 64911414. Tickets are selling fast so get in early.

Matinee shows:-
Sunday 14 August & Sunday 21 August

Evening Shows:-
Friday 19 August, Saturday 20 August,
Friday 26 August and Saturday 27 August



Pure Tasmania Cycle Challenge

18 February 2012

Tasmania has a new event debuting on the event calendar in February 2012 proudly supported by the Federal Group, Tasmania Police and local Councils. The event will showcase the North West, Central Coast and Kentish Council municipal areas to local and interstate visitors.

The cycling sportive, as the event is modeled, is not a race but an endurance road cycling event aimed at cyclists of all levels and ability. Cyclists must obey ALL road rules as no road closures will apply. Participants have two event variations to choose from. A single day ride from Cradle Mountain to Strahan to the ultimate 215km one day challenge from Devonport to Strahan. All events will finish together on Saturday afternoon in Strahan. The cycling event offers visitors an active experience and the motivation to travel to Tasmania to experience a mass participation cycling event that showcases some of our state's most unique tourist destinations and hospitality venues.

The event will donate a percentage of all entry fees over the event weekend to the Make a Wish Foundation, which will benefit a child and family right here on the North West Coast. Cyclists will enjoy a "Pure Tasmania" wilderness experience, hospitality and food and wines. The atmosphere will be infectious, the experience memorable, making this event potentially the "Targa" event for cyclists, and Australia's number one cycling endurance and tourism experience. More information on the Pure Tasmania Cycle Challenge is available at www.puretasmaniacyclechallenge.com.au

A Truffle Farm in Sheffield

It is winter and the leaves on the oak trees have mostly turned brown. For some other truffle farms the harvest time approaches. Phil and Nada Dickinson have had their truffle farm for four and half years. The oak trees, all two thousand one hundred of them, were planted less than two years ago.

It will probably be another two years before Phil and Nada see their first truffle. But that doesn't mean Phil and Nada won't have a busy winter. This is the time for fencing, repairs, digging drainage channels and planning for the next onslaught of weeds in the spring.

Phil and Nada still intend to consume their fair share of truffles. Tasmanian truffles will start to appear in the next few weeks. The season usually kicks off around about the winter solstice and should last nearly three months. Keep an eye out for them at local restaurants.

The Highlander Restaurant in Main Street Sheffield plans to use fresh Tasmanian truffles throughout the season. The Highlander Restaurant will sell you a truffle or two if you want to try them at home. Hopefully, in a couple of years the Highlander Restaurant will be using truffles from Phil and Nada's truffle farm in Sheffield. You can follow Phil and Nada's progress on their Tassie Truffle Facebook page. Just search for Tassie Truffles at <https://www.facebook.com/mobileprotection#!/pages/Tassie-Truffles/222698091093447>



Cradle Mountain Chateau

3718 Cradle Mountain Rd
Cradle Mountain TAS
Phone 03 6492 14043

The Wilderness Gallery has opened the world's first private Tasmanian Tiger Exhibition.

The Wilderness Gallery, in conjunction with the Tasmanian Museum and Art Gallery (TMAG), has opened the world's largest private exhibition of thylacine material, "Thylacine – The Tasmanian Tiger Exhibition".

Chairman of Trustees of the Tasmanian Museum and Art Gallery, Sir Guy Green, officially opened the exhibition, describing it as a highly professional, wonderfully comprehensive presentation which will provide visitors with a unique opportunity to increase their knowledge and understanding of this internationally recognised Tasmanian animal.

This new permanent exhibition tells the story of the Tasmanian Tiger and the human interaction that led to its extinction.

"The exhibition comprises a number of rare artefacts from the Federal Group Collection, as well as the thylacine skin rug that was



"This new permanent exhibition tells the story of the Tasmanian Tiger and the human interaction that led to its extinction."

purchased for TMAG and the Queen Victoria Museum and Art Gallery by the Federal Group in 2002. This exhibition is sure to reinforce the significance of our natural and cultural heritage and the journey we have taken on the road to conservation," Wilderness Gallery General Manager Mark Whitnell said.

"Visitors can learn about the Tiger's unusual biological features through a replica thylacine skeleton, the first whole-mammal skeleton produced in Australia using Stereolithographic BioModelling; enter a Trappers' Hut and travel back in time listening to the stories of the old trappers and snarers; and view recorded footage of the last Tasmanian tiger and images of Tiger hunters. This will be a truly world-class exhibition and we are very proud to have it housed at the Wilderness Gallery".

CRAFT BEER AT CRADLE MOUNTAIN

Cradle Mountain Chateau is now offering Tasmanian craft beer and food matching sessions every afternoon in their remodeled Brushtails Bar.

Bar staff guide customers through six local craft beers from the likes of Seven Sheds, Moo Brew and Two Metre Tall breweries, with each beer served with a carefully-matched food companion. Pairings include Seven Sheds Kentish Ale with caramelised zucchini and fetta tart, Moo Brew Pale Ale with a spicy chicken wonton and Two Metre Tall Cleansing Ale accompanied by a dainty pastry topped with chorizo, parmesan and sweet potato. Seven Sheds Razzamatazz – a honey wheat ale infused with local raspberries from Christmas Hills Raspberry Farm, rounds out proceedings with a dessert sampler.

The Cradle Mountain Chateau beer and food tasting experience lasts around 90 minutes and is held at 4pm daily (or by appointment for groups of six or more). Cost: \$25 per head.

Enquiries: Cradle Mountain Chateau, 6496 1404 or www.cradlemountainchateau.com.au



ROLAND VIA SHEFFIELD, TASMANIA

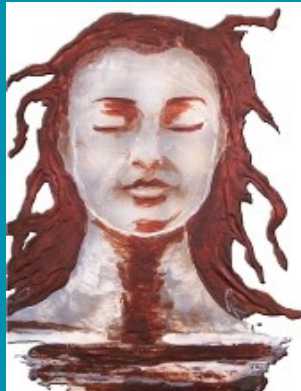
Driving through the magnificent Roland rural district, you will come across the Roland Art Gallery. This gallery is set in an area where Mt Roland dominates the landscape. Mt Roland continually inspires Patricia Kirkaldy to reach for her brushes.

About ten years ago, Patricia was motivated to take her natural ability more seriously, producing many realistic portraits of people and pets.

In more recent times, Patricia has expanded her horizons, taking up the challenge of abstracts. Inspired by the changing beauty of Mount Roland, Patricia is now painting landscapes.

Roland Art Gallery showcases a very extensive range of interesting, unusual and inspirational art works. Painting with chocolate is just one of Patricia Kirkaldy's every day mediums. View works from the absolute of realism, through to the aesthetics of abstract.

Visitors are very welcome to view Patricia's work and can call 6491 1196 or 0438 045 062 to ensure the gallery is open before starting out.



Green Tourism is proudly funded by a Climate Connect grant from the State government and encourages smaller tourism operators from around the State to cut back on their energy, water and waste usage. Participants also develop action plans for improvement, while measuring this usage in an internationally accepted Earthcheck online assessment program. This benchmarks them against other tourism operators in their sector, so they can monitor their progress against the best environmental practice across the tourism industry internationally.

The Tarkine Wilderness Lodge promotes environmental understanding, appreciation and conservation by providing ecologically sustainable accommodation and activities.

Congratulations to The Ugly Duck Out restaurant at Swansea for winning the prestigious Tasmanian Award of "Environment Excellence for Small Business Sustainability".

For further information on Green Tourism, contact Mike Willson on 0448 430 980 or email willsonconsulting@yahoo.com.au www.greentourism.org.au

Skwiz Café Gallery

63 Main St, Sheffield
Phone 03 6425 7433

Seagrass is a Launceston bluegrass band and will perform at Skwiz Café Gallery on Friday July 29, 2011. There will be a cover charge of \$10.00 great snacks best coffee in town free wine or byo. The band has a lineup of traditional bluegrass instruments and performs many of the bluegrass standards, such as Dixie Breakdown, Blackberry Blossom, Orange Blossom Special, Orange Mountain Special and Dueling Banjos.

However, Seagrass does many original pieces that are influenced from their individual backgrounds in blues. These are the pieces that make the band unique. These tracks use the colours and styles that are found in bluegrass and merge them into a unique sound to blur the boundaries of blues and bluegrass.

Our Open Mike night will be held on Friday August 26, 2011. This session is for local artists and any new talent that may turn up on the night. These nights are always popular. Prices are \$5.00 for non-performers and musicians have free entry.

For further information, email fridaynitefolk@gmail.com



Seagrass

DISCLAIMER

Although due care has been undertaken in compiling and producing information within this newsletter, Kentish Council does not guarantee the accuracy, completeness or currency of any information submitted by operators.

Vicki Saunders Tourism Development Officer
5 Pioneer Crescent SHEFFIELD TAS 7306

Ph: 03 6491 1036 | Email: vicki@kentish.tas.gov.au | www.sheffieldcradleinfo.com.au