

May/June 2011

Welcome to the twelfth edition of the Kentish e-news! All operators are encouraged to submit articles on a bi-monthly basis regarding new promotions or changes to tourism-related businesses to update other business operators on new developments within the Kentish region.

We encourage feedback, comments or suggestions from tourism operators about Kentish e-news to enable the newsletter to be as user-friendly as possible. This edition's featured image is Cradle Mountain taken by Dan Fellow © All Rights Reserved



Kentish Visitor Information Centre

5 Pioneer Crescent, SHEFFIELD TAS. Ph 03 6491 1036 or email kvic@kentish.tas.gov.au



Call into Kentish Visitor Information Centre at Sheffield on your way to stunning Cradle Mountain. A winter escape to Tasmania's iconic Cradle Mountain, with its snow capped craggy peaks in World Heritage Area surrounds, is a 'must do' wilderness experience! With roaring log fires, day spas and fresh Tasmanian food and wine to taste, Cradle Mountain will rejuvenate the senses. On the way, why not stay at Sheffield 'Town of Murals', a quaint rural town with Mt Roland as a stunning backdrop. More than 50 large-scale

murals have transformed Sheffield into Tasmania's Outdoor Art Gallery. The murals depict pioneering history and the natural beauty of the region.

Check out Railton's, 'Town of Topiary' with over 100 living sculptures to explore, a brewery, fibre optics and tearooms.

Experience Wilmot's 'Valley of Views' and novelty letterbox trail whilst visiting within the North West region of Tasmania. Wilmot has comfortable accommodation to suit visitors within close driving distance to Cradle Mountain.

Page Two

2011 Australian Masters Rowing Championship

Escape To

Redwater Creek Steam Railway

Page Three

Devils@Cradle

Wilmot Country Store

Page Four

Cradle Mountain Lodge

Sheffield Market

Wilmot Market

IN THIS ISSUE

Events in Kentish

2011 Australian Masters Rowing Championship – 2nd – 5th June 2011 at Lake Barrington International Rowing Course

Wilmot Market - 7th May & 4th June 2011

Sheffield Market – 21st May & 18th June 2011

Redwater Creek Steam Railway – 7th & 8th May and 4th & 5th June 2011

For further information on these events, accommodation bookings, attractions and tours, visit www.sheffieldcradleinfo.com.au or call 03 6491 1036.

To update or remove your details on the Kentish e-news mailing list, please contact:

Vicki Saunders Tourism Development Officer

5 Pioneer Crescent SHEFFIELD TAS 7306

Ph: 03 6491 1036 | Email: vicki@kentish.tas.gov.au | www.sheffieldcradleinfo.com.au

Events

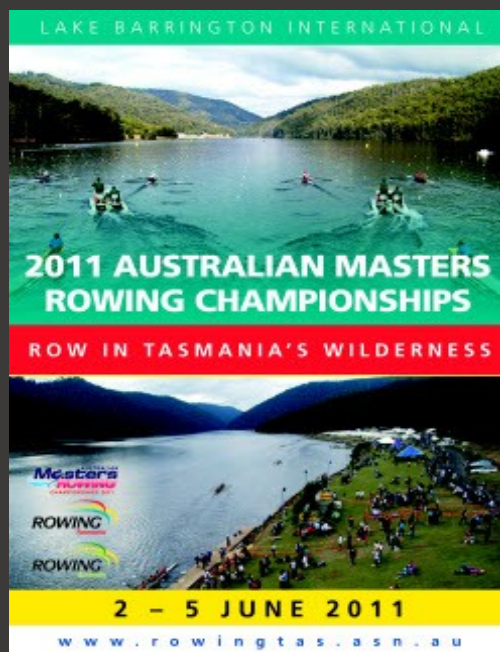
2011 Australian Masters Rowing Championships 2 – 5 June 2011

Rowing Tasmania will be hosting the Australian Masters Rowing Championships from Thursday 2 June until Sunday 5 June 2011.

Up to 500 veteran rowers are expected to come to Tasmania from all over Australia to compete at Lake Barrington over the course of the event.

Competition is for rowers from 27 years of age through to some rowers over 70. Age category events are scheduled to take place starting with heats on the Thursday through to finals later in the week. They will compete in a variety of classes of boats from single sculls through to eights in all age categories.

Lake Barrington will have merchandising, food and drink outlets in place for the event. Our food outlets will include hot and cold food with hot and cold drinks available for the duration of the event. Merchandising will include clothing. Participants will be staying in and around Sheffield for the competition and it is expected that some will holiday in the region after the event.



Escape To

New Luxury Accommodation at Wilmot!

314 Lake Barrington Road, Wilmot Ph: 03 6492 1394 W: www.escapeto.com.au

Escape To a romantic getaway which is exclusively yours! Offering a continental breakfast for two, self catering with a large range of gourmet produce to purchase or you can choose to have your own in-house cook and have a fully cooked breakfast, a cheese and fruit platter, seafood platter or a three course dinner all made with fresh Tasmanian produce. With a large range of Tasmanian wine, beers and mini bar items you won't need to bring a thing.

Escape To the perfect place for exclusive luxury accommodation. A couple's country escape, Escape To offers privacy, peace and tranquillity overlooking Lake Barrington at Wilmot in North West Tasmania's beautiful Cradle Country. Newly renovated, Escape To is situated off the Wilmot main road in a secluded and private location amid a hectare of gardens. The 10 hectare property is surrounded by natural bushland and provides access to the Forth Falls waterfalls walking track.

Escape To luxury with a king size bed, luxury linen and a pillow menu. The spa bath has an opening window that looks out over the garden. Bathrobes, slippers and luxury toiletries are all supplied. A big comfy lounge and plasma TV with a great selection of DVD's to watch, books and music including an iPod dock awaits your enjoyment. There are board games and jigsaw puzzles with a log fire burning. Where else would you want to be!

Redwater Creek Steam Railway Sheffield, Tasmania



Come ride the rails at Sheffield's Vintage Redwater Creek Steam Railway! Redwater Creek Steam and Heritage Society operate steam train rides on the first full weekend of every month from the original Sheffield railway station. Trains run every half hour from 11am until 4pm on Saturday and Sunday. This is a community project operated entirely by volunteers. A 1906 Krauss locomotive is still going strong, pulling Tasmanian heritage coaches! Great coffee is available at the station cafe. You can purchase copies of the updated history of the Sheffield Railway on site. For further information, visit www.redwater.org.au.

devils @ cradle

Tasmanian devil sanctuary, Cradle Mountain



3950 Cradle Mountain Rd
Cradle Mountain TAS
Ph: 03 6492 1491
www.devilsatcradle.com

All tours DAY and NIGHT provide visitors with a fully guided tour of the sanctuary where you will learn about Tasmania's three largest carnivorous marsupials, the Tasmanian Devil, Spotted-Tail and Eastern Quoll. The sanctuary operates breeding programs for all three species and your guide will ensure you get a close up encounter with a possibility of patting one of these animals. All tours DAY and NIGHT start with the inside component followed by a walk outside, within the sanctuary.

Day Keeper tours operate on the hour from 10am to 3pm and are 45mins in duration. The tour starts with a short introductory documentary and talk from the keeper regarding the lifecycle of these species followed by a walk through the sanctuary to view the breeding and conservation work.

Night Feeding tours occur at 5.30pm (and 8.30pm during daylight savings) and are 1.5hrs in duration. Considered as the premium tour, visitors are provided with a unique experience commencing with a short introductory documentary and talk from the keeper regarding the lifecycle of these species. The tour will include the opportunity to pat a devil. Feeding of the animals follows outside. The animals are more active at this time of the day and feeding stimulates competition and active behaviour which is quite a sight!



“All tours DAY and NIGHT provide visitors with a fully guided tour of the sanctuary where you will learn about Tasmania's three largest carnivorous marsupials, the Tasmanian Devil, Spotted-Tail and Eastern Quoll”

McDermotts Spotlighting / Devil Feeding combined tour is a combination of the **McDermotts spotlight** and the **devils @ cradle Night Feeding tour**. The bus arrives at devils@cradle following the inside component of the tour (the documentary and keepers talk). There is an opportunity to pat a devil, watch the feeding of the devils and view Spotted-Tail and Eastern Quolls. The keeper will answer questions as visitors wander around the sanctuary. The duration of the stay at the centre is around 35 – 40 minutes.



WILMOT COUNTRY STORE

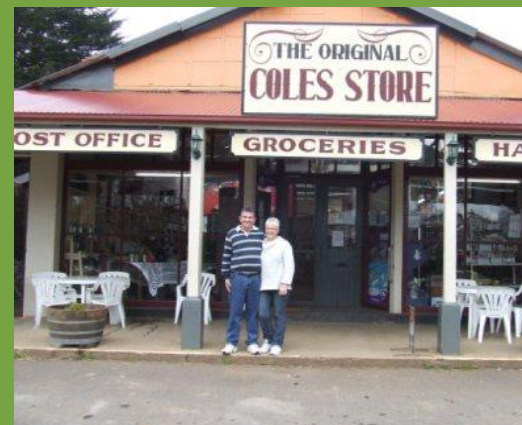
“The Original Coles Store”

64 Cradle Mountain Road, WILMOT TASMANIA 7310
Ph/Fax: 03 6492 1335 Email: wilmotstore@bigpond.com

Wilmot Country Store would like to advise everyone that the store will be closing one hour earlier from Monday to Friday during the winter months.

Delicious eat-in or take-away hot meals and drinks are always available with the cosy comfort of a roaring log fire on “cooler” winter days. Home-made soup with crusty bread and other home-made goodies are available for lunch.

Tea Room bookings are filling up fast for functions. If you would like us to organise a Luncheon or Morning/Afternoon Tea for your social group, please call either Pauline or Andrew on 6492 1335 and we can discuss your requirements.



WINTER OPENING HOURS

MONDAY – FRIDAY 7am – 6pm

SATURDAY 9am – 6pm

SUNDAY 9am – 4pm

PUBLIC HOLIDAYS 9am – 4pm

CRADLE MOUNTAIN LODGE

17TH ANNUAL TASTINGS AT THE TOP 25-27 JUNE 2011

4038 Cradle Mountain Rd Cradle Mountain TAS

Join us at Cradle Mountain Lodge, one of Tasmania's iconic wilderness experiences, as we celebrate the 17th year of Tasmania's premier culinary event "Tastings at the Top". A gourmet extravaganza rated among the country's best food and wine experiences; a 3-day festival celebrating the finer things in life – a chance to celebrate the very best in Tasmanian produce.

From degustation dinners to cooking demonstrations, fresh produce markets to wine and cheese tastings and decadent spa treatments at the famous Waldheim Alpine Spa, Tastings at the Top encompasses the very best Tasmania has to offer. This event will be jointly hosted by Peter Bourne, "the Wine Man" from Sydney and Nick Haddow, owner and artisan cheese maker from the Bruny Island Cheese Co.

Wine Maker Degustation Dinner Dates for 2011: Friday 20th May 2011; Friday 22nd July 2011; Friday 19th August 2011. For further information and bookings, please contact our Reservations staff on 1300 806 192 1300 806 192 (within Australia) +61 3 6492 2103 (International) or email reservations@cradlemountainlodge.com.au



SHEFFIELD MARKET

Sheffield Market has been blessed with great weather bringing the crowds out in droves. Waine and Sharon Whitbread, who have recently resurrected the market, were overjoyed after having the last two markets virtually washed out.

The Sheffield Town Hall and High Street was packed with locals and visitors alike. A variety of items and products are offered including a huge range of tools for the boys, air suspension, fresh potatoes, arts and crafts, blankets, pet products, soaps, Rawleigh's Products, socks, clothes and a huge range of second hand books just to name a few.

The next two Sheffield Market days will be held on the 21st May and 18th June 2011 at Sheffield Town Hall from 9am-2pm. Call Sharon on 03 6492 1302 for further information.



Wilmot Market

Wilmot hosted a family extravaganza on 5th March with a combined Wilmot Market and Wilmot Progress Association's Family Fun Day. There was something for everyone with the market dishing up its usual range of local crafts including cards, jewellery, woodwork, woollens, clothes, second hand goods, toys, socks, T-shirts, collectables and other nic nacs. The Country Kitchen is renowned for some great wholesome food with room to sit down and catch up on the local gossip. The family fun day at the school included dodgem cars and a jumping castle for the kids. The Wilmot Fire Brigade held a fire safety stall. We had a record crowd at the markets and the day was topped off with great weather. The next two Wilmot Markets will be held on the 7th May and 4th June 2011.



Contact Sharon on 03 6492 1302 for further information.

DISCLAIMER

Although due care has been undertaken in compiling and producing information within this newsletter, Kentish Council does not guarantee the accuracy, completeness or currency of any information submitted by operators.

Vicki Saunders Tourism Development Officer

5 Pioneer Crescent SHEFFIELD TAS 7306

Ph: 03 6491 1036 | Email: vicki@kentish.tas.gov.au | www.sheffieldcradleinfo.com.au